



Pratt Community College

Monthly Newsletter

The

The official newsletter of PCC

# BEAVER

NOVEMBER 2017

Buzz

## Call for upcoming newsletter content

If you have information, ideas for new content, fun facts, or PCC trivia, send them to Megan for inclusion in the next newsletter!

>>> [megane@prattcc.edu](mailto:megane@prattcc.edu)

## Contents

Coat Drive	2
ADN Restructuring Update	2
Riney Art Gallery	3
PCC/WSU 2+2 Agreement	4
Back to the USO	4
People of PCC	5
People of PCC	6
Volleyball Samaritan Drive	7
Men's Soccer Wrap up	7
Late Night in the Lesh	8
Women's Soccer Wrap Up	8
Student Life/Calendar	10

## PCC named one of the top 150 in nation for fourth time

Pratt Community College is recognized for being one of the nation's top 150 community colleges for a fourth consecutive cycle. Highlighting the critical importance of improving student success in America's community colleges, the Aspen Institute College Excellence Program today named PCC as one of the nation's 150 top community colleges, challenging it to compete for the \$1 million fund for the 2019 Aspen Prize for Community College Excellence.



The Aspen Prize, which is awarded every two years, focuses on student success and looks at outstanding achievements in four areas: learning; certificate and degree completion; employment and earnings; and high levels of access and success for minority and low-income students. The idea is to share promising practices as well as spotlight the need for a quality postsecondary education to attain good jobs and careers, according to officials.

"This is an amazing accomplishment and my hats off to the faculty, staff, students and trustees that work tirelessly to help our students be successful," said Dr. Michael Calvert, President of PCC. "I am very proud to be part of an institution that values and models quality instruction and care and concern for students. Promoting student success is truly a team effort!"

PCC is also eligible for the 2019 Siemens Technical Scholars Program. Founded in 2015, the Siemens Technical Scholars Program is a partnership between Aspen and the Siemens Foundation, designed to highlight the benefit to individuals, communities, and businesses delivered by excellent community college programs that prepare students for middle-skill jobs in science, technology, engineering, and math (STEM) fields.

Eight excellent programs within strong institutions will be recognized for their outstanding practice, and each will be awarded \$50,000 to use towards further program development and student scholarships. Only 10 percent of the colleges nation-wide are eligible to apply for either the Aspen or the Siemens Program, and only 3 percent of the colleges are deemed eligible for both.

The top 10 finalists for the 2019 Aspen Prize will be named in May 2018. The Aspen Institute will then visit each of the finalists and collect additional quantitative data, including employment and earnings data. A jury will then select in spring 2019 a grand prize winner, finalists with distinction and rising stars. A full list of the 150 community colleges is available at [www.highered.edu](http://www.highered.edu).

## Upcoming Dates

Back to the USO	Nov 11
Spring Musical Auditions	Nov 14-15
Tech Day	Nov 15
Last Day to Withdraw	Nov 20
Thanksgiving Break	Nov 22-23

# Pratt Community College Donates 268 Coats to Local Community Members

Pratt Community College donated 268 coats and jackets to children and adults in need of warmth this winter. The coats were donated to the Pratt Hope Center so they could be distributed in the community. Blankets, sweaters, sweatshirts, gloves, and hats were also donated.

"We were so glad to partner with One Warm Coat this winter. There is a real need for coats in our local community and One Warm Coat's program made it easy to us to make a difference and spread much needed warmth. We had a goal of collecting 100 coats, and we surpassed it," said Jessica Sanko, Coordinator of College Relations and Student Services Assistant.

Each year, hundreds of thousands of gently worn coats are distributed across North America to children, women and men in need through One Warm Coat's Coat Drive program. "We are so grateful for our wonderful Coat Drive Ambassadors like Pratt Community College. We are thrilled Pratt came together to provide warmth for their neighbors in need and are thankful to the many area residents who donated to PCC," said One Warm Coat President & CEO, Jennifer Stockard.

One Warm Coat is a national non-profit organization that works to provide a free, warm coat to any person in need and raises awareness of the vital need for warm coats. One Warm Coat supports individuals, groups, companies and organizations across the country by providing the tools and resources needed to hold a successful coat drive. Coats are distributed in the communities where they were collected, to any person in need, without charge, discrimination or obligation. Over the last 25 years, One Warm Coat has worked with its volunteers to give away more than 5 million coats. Learn more at [www.onewarmcoat.org](http://www.onewarmcoat.org).



## ADN Program Restructuring Update

Current initiatives:

- Research on curriculum development through webinars, readings in nursing education literature, professional journal articles, and input from other schools across the nation.
- Professional development such as attending a National Council of State Boards of Nursing (NCSBN) NCLEX Workshop and Kansas Council of Associate Degree Nurse Educators (KCADNE) Conference.
- Development of a "Proposed Curriculum Changes" table in which the current curriculum is compared to proposed changes using evidence-based research. This includes the program's mission statement, philosophy, organizing framework, student learning outcomes, and core concepts.
- Completion of a Nursing Graduate Survey which was sent to the last 3 years of both PN and ADN graduates. The purpose was to gather information concerning strengths and weaknesses of the program. 152 surveys were sent with 30 replies (20%). The results were tabulated and written comments will be reviewed and summarized.
- Creation of a Curriculum Advisory Team devised of nursing graduates and past instructors. The purpose of this team is to assist in gathering input regarding current practice and trends and to give feedback/recommendations for program restructuring.

The restructuring team attends the Pratt Community College Board of Trustees meeting every month to give an update report. A report will also be given at the quarterly Kansas State Board of Nursing (KSBN) meetings.

The team will be meeting with a curriculum development consultant from Assessment Technology Institute (ATI) on November 7 & 8. KSBN will also make a consultation visit on November 30. These consultation services are being paid for through a Kansas Nursing Initiative Grant.

# Riney Art Gallery Featuring Photography by John Patton

During November and December, Pratt Community College's Delmar Riney Art Gallery will exhibit the works of featured artist John Patton.

Patton has been featured in the Delmar Riney Art Gallery before. This year's exhibit features photographic elements mixed with graphic design. Patton's exhibit features an array of subjects from nature and portraits to close-up action images.

"Since taking my first photography class at the age of 17, I was hooked on the medium," said Patton. "At that time there was little to no digital photography. Learning on film was a great benefit to me because I had to take more time to consider composition and camera settings to get the shot right the first time. Those lessons have carried through to this day."

While working on his Bachelor's degree, Patton was employed at The Pratt Tribune in the advertising department. A large part of the job was visiting various businesses in town to photograph products and staff for use in advertisements. This experience gave Patton a great deal of real world knowledge about digital photography as well as Photoshop manipulation.

In 2005 Patton opened his own graphic design business, Patton Design.

"My work here has concentrated on web site design, brochure design, logo design and more," said Patton. "I have also taken many staff photos, individual and group, with this work. This led to some of these individuals asking me to make their family portraits. Eventually, demand became great enough that I decided to set up a photography business apart from my graphic design business."

Patton says that he is somewhat unusual for a photographer because he is multi-disciplined. Patton also enjoys shooting across a range of genres. His work includes artistic, product imagery, photojournalism, landscape as well as portrait photography.

"I enjoy the variety and believe that the concepts that make for effective images are universal," said Patton. "I appreciate the opportunity to share my knowledge."

Patton was able to fill in for the regular photography instructor at Pratt Community College for a semester and has also offered workshops. Patton says his blog also has been a great venue to offer tips and advice to those who would like to learn more about how he shoots and edits his images. You can visit his website at [www.johnpattonphotography.com](http://www.johnpattonphotography.com).

Patton's work will be on display through the end of December. The Delmar Riney Art Gallery is located in the Riney Student Center and open Monday - Thursday 8 a.m. - 5 p.m. and Friday 8 a.m. to 1 p.m., or by appointment.



# PCC and WSU Sign 2+2 Engineering Agreement

Representatives from Pratt Community College and Wichita State University gathered on Oct. 19 to sign a 2+2 articulation agreement in engineering.

Through the partnership, students interested in engineering can attend PCC for two years to obtain an Associate of Science degree then seamlessly transfer to WSU for an additional two years to obtain a Bachelor of Science degree in Engineering Technology with a concentration in either Mechatronics Technology or Engineering Technology Management. The agreement creates a coordinated four-year program between the two parties with a clearly outlined curriculum designed to give students a straightforward path into the engineering field.

Students who have earned an A.S. degree according to the engineering technology degree plan and achieve a minimum cumulative GPA of 2.0 from PCC will be guaranteed admission to the WSU engineering program. Upon graduation from PCC, students will enter WSU with a junior status toward a baccalaureate degree.

"Through this agreement, students will be able to leave Pratt Community College as a rising junior," said WSU Provost and Senior Vice President, Dr. Anthony Vizzini. "This collaboration gives students the opportunity to graduate with their bachelor's degree in a timely fashion."

The partnership between the two schools provides a more affordable route for future engineers since the first two years can be completed at PCC rather than a four-year university.

"The opportunity to provide a seamless pathway allows students to become fiscally responsible," said PCC Vice President of Instruction, Dr. Michael Fitzpatrick.



## Performing Arts Department salutes Veterans

To recognize veterans for their service and to celebrate their day, the Pratt Community College Performing Arts Department is hosting a USO show on Saturday Nov. 11 at 7:30 p.m.

Back to the USO will feature music from 40s era and patriotic music. It will feature the PCC Choir, Encore, Solos and Kids' Choir.

"We started this four years ago and the students loved being able to recognize the veterans so decided to do it again this year," said Misty Beck, head of the Performing Arts Department.

The show will be held in Carpenter Auditorium. Veterans and first responders are invited to be our guests. There will be a \$5 general admittance fee.





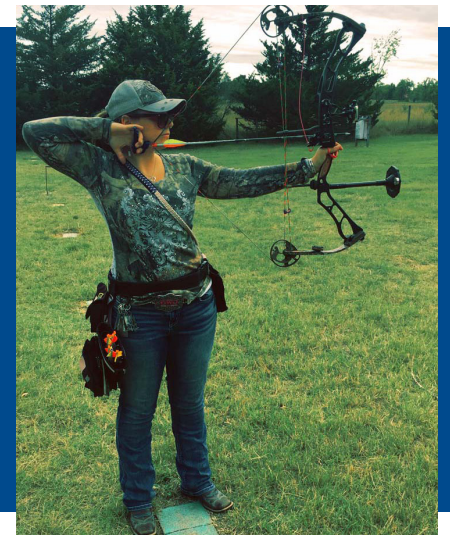
# PEOPLE of PCCC

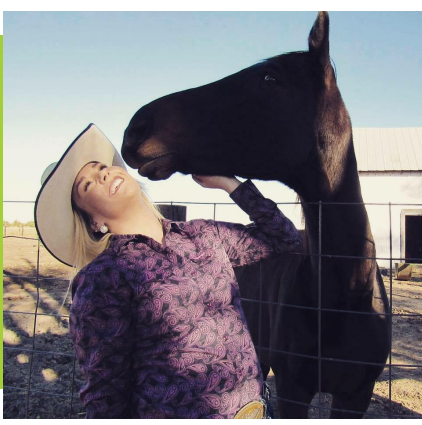
“In elementary school I was playing soccer for Fort Worth United, a club team in Texas. It was our first time ever playing as a team together. We were in our first tournament and we made it through to the very end. We were going to play the best club team in our area. We ended up at 0-0 the entire game, no one had scored, so we went into PKs. I remember I was one of the last ones called to kick for one of the PKs. All I could think about is ‘I suck at PKs. I am no good at PKs.’ I remember looking at the goalie and thinking, ‘She is going to save this. She is going to save this and we are going to lose and I am going to be really upset. Or, I am going to score this and I am going to be really excited. We are going to win.’ I ended up scoring it and freaking out. That is probably still one of the best moments of my life.” - Brittany, Soph.



“My dream career is to be in wildlife retail similar to Dick’s Sporting Goods or Cabela’s or Bass Pro Shop. I would like to possibly have my own retail store at some point in time. I want to be able to not just sell what I am passionate about but also help people as they come in so they aren’t spending money on things that are completely unnecessary.” - Joel, Soph

“Archery is kind of my passion. I like to shoot my bow. I like to be outside and getting people to enjoy the outdoors. That’s why I am in the Wildlife and Outfitting Operations program and that’s why I am thinking about outdoor education after this. I don’t really have a full on dream job, I just want to work somewhere in the outdoor industry with women and maybe kids. I was involved with 4H shooting sports back home growing up. I was a 4H shooting sport state ambassador, however I aged out before I could go on to be a national ambassador. Maybe if I do something with 4H like working in an extension office, I can get kids interested in the outdoors through shooting sports.” - Shania, Soph.





"I'm here for animal science. I still have a long ways to go. I haven't decided if I am going to go full on vet or do something specific like bovine, or equine, or something in a certain field. I was born on a farm, so I am a big time farm girl. We always had horses and cows growing up. I've raised my own bucket calves there for a while and I still have a couple at home. I've had them since they were four days old. Growing up, I always knew that I wanted to care for animals. I always loved having them around." -Halie, Fresh.

"My parents own Ace Hardware on Main Street here in Pratt. It's a family business. I am the fifth generation involved. I started working for the business and actually being on payroll when I was 15. I grew up there and always enjoyed seeing what works and what doesn't and meeting other people in retail. I've met a lot of different faces and personalities. The joy of the sale as the customer walks out of the door with their merchandise is always satisfying. I'll probably move away to get some new experiences and a different job to work for someone else for a while. I want to see how they work, what works for them, and their different tactics then bring all of that back." - Tyler, Soph.



"I have been playing soccer ever since I was five, so fifteen years now. It is one of the reasons I came here. Kevin Kewley actually used to coach me when I was younger. This is my second time playing for him. My advice to future players is to always listen to the coach. They always know what they are doing. Sometimes I feel like coaches will tell their players something and the players just blow it off. They don't take it seriously, which gets them nowhere. As long as you listen to your coach, they will get you to where you want to be." - Wyatt, Soph.



# PEOPLE of PCC

People of PCC is a spinoff of the well-known Humans of New York project. The goal is to feature students, employees, board members, and anyone else who is associated with PCC to learn more about their unique stories and life ambitions.

Each Friday during the academic school year, features detailing the lives and stories of those related to the college will be published to the PCC website, social media and other platforms to provide a variety of ways to get each story heard.

"With a glimpse into the backgrounds and daily lives of fellow peers, we can develop a better understanding of the people around us and create a community that makes us PCC proud," said Jessica Sanko, Coordinator of College Relations and Student Services Assistant.

To be considered as a feature for People of PCC, please contact Jessica Sanko at [jessicas@prattcc.edu](mailto:jessicas@prattcc.edu) or 620-450-2192.

# PCC and Dodge City CC combine to raise equipment for Samaritan's Feet

Pratt Community College volleyball and Dodge City Community College volleyball combined their efforts for an equipment drive to benefit Samaritan's Feet. The teams collected packages of socks, pairs of shoes, and various other volleyball equipment and athletic apparel.

This was PCC's second year contributing to Samaritan's Feet. The Blue and White used the Dodge City match as an exchange of equipment for admission.

"I became aware of the Samaritan's Feet program three years ago through my coaching mentor Ibraheem Suberu, who was born in Nigeria," said PCC Head Volleyball Coach Jenny Mueller. "He has been such a great influence in my life and my coaching career that I also wanted to get involved in this amazing cause. How often do we take the little things for granted? Something so automatic for all of us, having shoes and socks to wear when we play; we take those things for granted as they will always be there for us. This organization helps so many that have so much less. If I can use my platform as the volleyball coach at Pratt Community College to help raise awareness, I would gladly do so."

Samaritan's Feet is a non-profit organization for the purpose of sharing hope with children in need by washing their feet, giving them a new pair of shoes, and helping them to believe that their dreams can come true. Samaritan's Feet is a growing movement of people willing to humble themselves as servants so that others might know the opportunity to a better life. Samaritan's Feet have had over 3,000 high school, city leagues, university and college coaches aid in the cause by coaching games, donating equipment, or managing practices in addition to making public appearances in their bare feet. With the cooperation between Samaritan's Feet and the volleyball coaching community awareness has been raised which has helped provide shoes, free skills training and volleyball resources to impoverished children especially in the African continent.



## PCC men's soccer wraps up season against Barton CC

Pratt Community College men's soccer traveled to Barton Community College to end the 2017 season. Barton scored an early second half goal which gave them the edge in the match. Pratt attacked trying to find the equalizer, but the defense of Barton held. PCC drops a close one to Barton CC 1-2.

The Blue and White got on the board first in the match. Carlos Reyna scored in the 25th minute to give PCC the lead. Barton countered with a goal by Angel Lopez before the end of the half. Using the momentum from halftime, Barton's Sora Wakabayashi scored just a few minutes into the second half. That would prove to be the difference as the Beavers could not break the Barton defense.

PCC men's soccer season comes to a close. Sophomore Nathan Wilson led the Beavers in scoring, assists, and points with five goals, three assists, and 13 points. Goalkeeper Louis Sharp led the defense for the Blue and White with 51 saves.



# Late Night in the Lesh introduces the 2017-18 PCC winter sports teams

The Pratt Community College athletics fans got their first look at the 2017-18 winter sports teams at Late Night in the Lesh following the PCC vs Dodge City CC volleyball match. It was a night of festivities to kick off the 2017-18 winter sports season.

The Late Night in the Lesh started with a stunt routine by the PCC cheer squad.

Following the cheer squad was the introduction of the PCC women's basketball team as well as a scrimmage between the players. This year's women's basketball team returns six from last year. The Beavers will look for the freshmen talent to step up quickly to play a role with the returners.

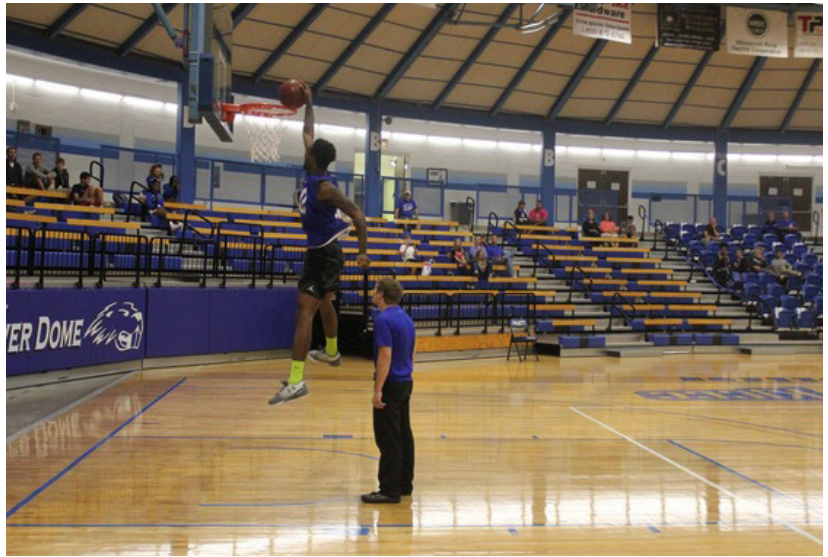
Next was the introduction of the PCC Wrestling team members. This year's team goes into the season highly decorated.

Coach Ken Kepley has assembled a squad consisting of 18 state medalists, five state champions, and five high school All-Americans. Combined with a returning group with three NJCAA national qualifiers, the team has a solid foundation to be a national competitor this year.

The PCC men's basketball team was then introduced and scrimmaged. PCC men's basketball has five returners from last year's team, and has brought in several talented freshmen to build onto the program.

PCC indoor track and field was introduced. The team returns four national qualifiers from the indoor season last year. They have also seen growth in the distance events on both the men's and women's side.

The festivities continued as the men's and women's teams paired up for a three point contest. Teams of two took turns shooting and rebounding. Channa Parvin and Clint Bentley III teamed up to win the competition.



## PCC women's soccer closes season against Barton CC



Pratt Community College women's soccer closed out their season on the road with a game in Great Bend, Kan. against Barton Community College. The Beavers could not overcome the attacking offense of Barton. PCC closes out the season with a 1-7 loss to Barton.

The Blue and White faced an unrelenting offense from Barton. Goalkeeper Brittany Smith closed the match with 23 saves for PCC. Cala Jamison got a late goal for the Beavers. She was assisted by Veronica Hernandez.

PCC women's soccer closes out the 2017 season. Smith ended the season with 237 saves. Her highlights are her two shutouts against Garden City CC. Leading scorer for the Beavers was Jamison with four goals. She tied for most points on the team with Avery Villines. Both players had eight points.







November 2017

Sun	Mon	Tue	Wed	Thu	Fri	Sat
			1 Women's/Men's Basketball VS Tonkawa/OKC Prep 6PM/8PM	2 Pizza With The President Novotny Novotny - 9PM Woj Woj Hall - 10PM	3	4
5 Daylight Saving Time Ends Women's Basketball VS Enid 6PM	6	7 Election Day	8 Women's/Men's Basketball VS Tabor JV 6PM/8PM	9 Pizza With The President Beck and Porter Beck Hall - 9PM North and Scholarship North Hall - 10PM	10 Performing Arts Presents "Back to USO!!!"	11 Veterans Day Women's/Men's Basketball VS Independence 2PM/4PM
12	13 Bringing the Farm 2Campus Outside the Cafe 5PM-7:30PM	14 Drop the MIC Night Library 7:30 to 9PM	15	16 Thanksgiving Movie Woj Hall 9PM	17	18 Women's/Men's Basketball VS Hutch 5PM/7PM
19	20 Turkey Cookie Decorating Beaver Bites 8PM	21	22	23 Thanksgiving Day	24	25
26	27	28	29 Women's/Men's Basketball VS Coffeyville 6PM/8PM	30 Friday Dec 1st Pratt After Dark Winter Wonderland	<b>Volleyball Intramurals</b> November 14 <sup>th</sup> : <b>Week #1</b> November 28 <sup>th</sup> : <b>Week #2</b> December 5 <sup>th</sup> : <b>Week #3</b>	

**BRING STUDENT ID to all STUDENT ACTIVITIES!**

Follow us on Social Media

Add Bucky Beaver  
 @prattcc  
 @prattcc  
 @prattcc

Download the App

Beaver Nation

**RECREATIONAL TO DO's In and NEAR PRATT!**

\*Christmas in the Park - Lemon Park - November 18th

\*Rolla Rena Skate Center \*Movie Theaters - Kingman, Greensburg, and Pratt

For PCC Away Games Visit!!! [WWW.GOBEAVERSPO RTS.COM](http://WWW.GOBEAVERSPO RTS.COM)

**Performing Arts Presents...**

**"Back to USO!!!"**

November 11th @ 7:30PM  
**Auditorium**

**Performing Arts Auditions...**

**Joseph and the Amazing Technicolor Dream Coat**  
November 14<sup>th</sup> & 15<sup>th</sup> @ 7PM  
**Auditorium**

CHECK IN AT EVENTS. EARN POINTS.  
**GET REWARDED**

**GO BEAVER NATION**

