



Pratt Community College

Monthly Newsletter

The

The official newsletter of PCC

BEAVER

September 2016

Buzz

Call for upcoming newsletter content

If you have information, ideas for new content, fun facts, or PCC trivia, send them to Megan for inclusion in the next newsletter!

>>> megane@prattcc.edu

Pratt Community College Ranked 14 in Nation

Pratt Community College was recently ranked number 14 on the 2016's Best and Worst Community Colleges by Wallethub, a company dedicated to helping people efficiently attain top wallet fitness.

Wallethub's analyst studied 821 Community Colleges across the nation in order to find the best and worst Community Colleges. The three main categories reviewed were cost/financing, education outcomes, and career outcomes. PCC ranked not only 14 overall but received the number one spot in the State of Kansas.

PCC continues to succeed at being an affordable institution with exceptional student success. In a study conducted between 2008 and 2013, PCC graduates earned a higher annual income than the average graduates from all Kansas public colleges and universities.

"We are excited to be recognized again," said PCC President Dr. Michael Calvert. "It validates the great work we have done in our classrooms in support of our students and their success."

PCC will add this ranking to its already impressive two time appearance in Smart Assets' 100 Best Community Colleges in the Country and the Aspen Institute College Excellence Program as one of the nation's 120 top community colleges for the last three awards.

Contents

Hansen Director of Nursing	2
Director of Res. Life	3
Patterson Makes Rodeo Finals	3
Skyland Grain Signs	4
Drones in the Classroom	5
Ag Power gets \$300k Tractor	6
EPT Gains New Equipment	6
Sean Flynn Hired for Basketball	7
Under Armour and PCC	7
Featured Artist	8
Performing Arts	9
Student Life Recap	10
September Student Activities	11

Upcoming Dates

Labor Day - No Classes	Sept 5
Kansas State Fair	Sept 9-18
Constitution Day	Sept 10
Certification Date	Sept 13
Board of Trustees Meeting	Sept 19



Hansen New Director of Nursing

After working at the college for six years as a nursing instructor, Kim Hansen has been promoted to Director of Nursing.

Hansen is a graduate of Pratt Community College's Nursing Program. She graduated from PCC in 2008 and has worked at Pratt Regional Medical Center before switching to nursing education in 2010. Hansen says that she truly enjoys the art of being a nurse and wants to help future nurses achieve their goals.

"I love the art and science of caring that is nursing," said Hansen. "That is who I am as a person. I really enjoy working with students and helping them accomplish their goals and dreams."

In April of 2016, the Nursing Program began their search for a new Director of Nursing. The Vice President of Instruction, Dr. Michael Fitzpatrick and a committee of PCC employees and community members elected Hansen after weeks of interviews and discussion.

"The hiring committee elected Kim because she is a qualified leader," said Fitzpatrick. "Kim has a military background having served in the U.S. Air Force. Those leadership qualities are what this position requires. Her vision for short-term as well as long-term and gaining accreditation to the program are aligned with what the institutions goals are and that was an important aspect when looking for the right person for the position. Her knowledge of PCC as a graduate and faculty member gave her a unique perspective of what the Program was and what it has the potential to be."

Hansen's familiarity with nursing education practices and expectations for the future of the program stood out to the committee during the search.

"My goal in this new position is to shape this Program into one that students can be proud to say that they came from," said Hansen. "I ultimately want the PCC Nursing Program to be the top in the state. I want our students to be confident and have a foundation that they can grow from."

Hansen's official transition to Director of Nursing was Aug. 1. Throughout the end of the spring 2016 semester and during the summer Hansen and Nursing Instructor Tracy Reynolds were acting interim co-directors and worked together to get ready for the new school year and finding two new nursing faculty members to add to the department.

Over the summer the Nursing Department hired Anna Reid BSN, RN, and Kelsey Brownlee, BSN, RN.

Reid was hired in July and has been able to go through a 3-week orientation with Hansen and other faculty. Reid will be teaching the PN program on Pratt's main campus solely on her own.

"Anna is definitely up for the challenge," said Hansen. "She is caring as well as professional. I am excited to see her in this role."

Reid has been a nurse since 2009 previously working at Kingman Community Hospital.

Brownlee is working right now as a nurse in Anthony, Kan. She will be teaching clinicals for the Nursing Program.

"Kelsey is ready to jump right in," said Hansen. "She brings a wealth of knowledge with her experience and being able to still work in the field."

The PCC nursing program has 16 PN students and 28 ADN students this year coming from all over the country.



Anna Reid, BSN, RN

PCC Hires Director of Students and Residence Life

Pratt Community College welcomes new Director of Director of Students & Residence Life, Darren Randall. Vice President of Students and Enrollment Management, Lisa Perez-Miller announced the hiring of Randall.

Randal's first day of employment was Monday Aug. 29. Randall returns to the United States after serving as a summer teacher on the island of Dominica at the International Prep School. Prior to his summer teaching assignment, he was a full-time instructor of Health & Physical Education at Northwestern Oklahoma State University.

In the past Randall was an educator at various private K-12 schools at the Bermuda Institute and in the Cayman Islands. For six years he served as Assistant Professor of Health & Physical Education at Oklahoma Panhandle State University. Throughout his career in higher education, he has also served as a Resident Hall Director, Intramural Assistant Director and Boy's Director at Wewoka Woods Summer Camp in Oklahoma.

He and his wife, Rachelle, and their two children live on campus at PCC.



Randall (left), Brad Luthe and Scott Goodheart during the student ice cream social Welcome Week event.

PCC Rodeo Head Coach Qualifies for Nationals

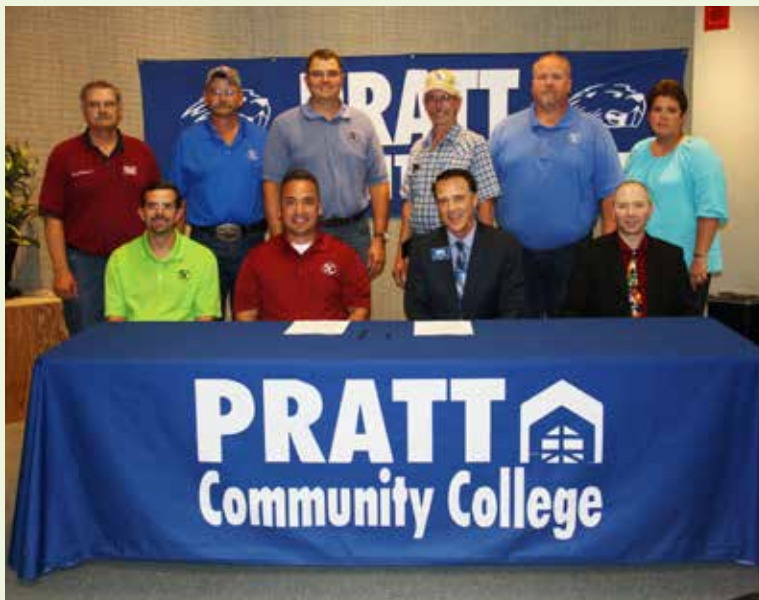
Rocky Patterson, current Head Coach for Pratt Community College's Rodeo Team, finds himself in first place standing in Steer Roping for the 2015-2016 season. Patterson, who has qualified for 2016 Nationals, will be one of the 15 steer ropers invited to compete in Mulvane, Kan. in November for the Title.

Patterson, raised on a farm between Anthony and Kiowa, Kan., rodeoed at Allen Community College and Oklahoma Panhandle State University. He was the 1992 PRCA Rookie of the Year, and a 19 time Qualifier to the National Finals Steer Roping (NFSR). Patterson holds three World Champion Titles, most recently in 2012.

Patterson has coached the PCC Rodeo since spring of 2015. The team will begin their 2016 season at Colby Community College on Sept. 16 with a roster of more than 30 athletes. Visit the PCC Robdeo webpage for more information about Patterson and the Rodeo team.



Skyland Grain Visits Campus and Signs Partnership



Officials from Skyland Grain, LCC visited the Pratt Community College campus on Aug. 8 where they made their partnership official. Skyland Grain CEO David Cron and members of the Skyland team travelled from their headquarters in Johnson, Kan. and eastern administrative offices in Cunningham on Monday to visit the PCC campus and together signed a partnership agreement for the newest agriculture program launching this Fall.

PCC President, Dr. Michael Calvert and Skyland Grain Assistant CEO, David Rodriguez sat together with Skyland Grain's Agronomy Division Manager, Justin Ochs, and PCC's VP of Instruction Dr. Michael Fitzpatrick on Monday to sign the official documents.

Rodriguez and Calvert expressed their excitement for the new partnership and know that it will be a great addition to the Ag program.

"Everyone at PCC has been a pleasure to work with getting this program launched," said Rodriguez. "We are honored to be a part of PCC and the development of students. PCC is where we want to be"

The partnership between PCC and Skyland Grain will bring a Crop Application one year certificate program to the agriculture department. At the end of the program students will have learned fundamentals of agriculture science, technology at PCC and gain workforce experience from Skyland Grain.

Calvert expressed his anticipation for the programs launch and what it will bring to the agriculture department and institution as a whole.

"For the fourth year in a row PCC students graduating with an associate's degree have a higher annual wage than the average of associate's degree and bachelor's degree graduates," said Calvert. "I anticipate that the success of this program and the students who will earn their certificate and be able to join the workforce will be an asset to our state."

Crop Applicator careers are on the rise according to PCC's Career Coach. Job openings are projected to grow six percent over the next 10 Years and starting salary ranges between \$44,000 and \$55,000 at Skyland Grain. Crop Applicators are highly trained professionals specializing in pesticide handlers, sprayers and applicators, mixing pesticides, herbicides, or insect sprays and repellents for application on lawns, landscapes, crop fields and pastures. They are able to identify areas requiring treatment and they manage the transportation of equipment and chemicals to and from the treatment site.

Pratt Community College's Skyland Grain Crop Applicator option is a one year, 34 credit hour, Certificate Program. To successfully complete the Program, students are required to enroll in an occupational work experience course and be prepared to test for the Commercial Pesticide Applicator License and obtain a Class A Commercial Driver's License upon employment.

Skyland Grain and PCC are offering scholarships to students who enroll in the program that will begin this Fall. For more information about the program contact Lori Montgomery at lorim@prattcc.edu.

PCC Acquires High-tech Drones

Two programs at Pratt Community College are utilizing technology trends inside of the classroom. Wildlife Outfitting and Operations (WOO) and Electrical Power Technology (EPT) are using drones to train students new ways to incorporate technology into their two different industries.

PCC purchased four 4 DJI Inspire 1 drones to use between the two programs. Both are using technology in different ways than before.

WOO instructor Luke Laha teaches every class in the program from Wildlife Business, Hunter Education to Outdoor Media Production. The Outdoor Media Production class explores photography and videography for the outdoors and now aerial videography. Using video and imagery to help create or market a business or product.

Students will gain extensive training on operation of the drones to capture 4K video and high resolution pictures. At the end of the semester they will use footage from the drones and other media sources to create a commercial for a business or product.

Laha will also be able to utilize the drones to prepare for the class as well. He has already began shooting video that he will use to teach the class about video techniques, framing and video editing.

Vice President of Instruction, Dr. Michael Fitzpatrick is supportive of bringing technology into the classroom and giving students an opportunity to utilize new technologies that can help them in the workforce.

"It's beneficial for these programs to think about their curriculum differently and being open to technological trends," said Fitzpatrick. "Our mission is to serve the need of the student and give them tools to be successful when they move on."

The drones are tools for creativity as well as productivity. The Electrical Power Lineman program will be training students for certification, a new course added to the curriculum.

"A year ago the lineman industry in Kansas held discussions on advanced technologies and how to utilize them," said Dave Campbell, EPT Instructor. "Students will now have the opportunity to be trained and receive a drone certification which is what employers in the state want."

The drones will be used in the field by the lineman to assess damage or issues from a distance. In a case where a lineman may not be able to quickly and safely troubleshoot a problem the drones can go in and get footage of the issue in real time which will help expedite the planning process. Weather conditions and busy highways are examples of when sending a drone in rather than a person could be beneficial.

"We embrace technology in our industry," said Campbell. "When it changes it's for the better and makes the job easier to accomplish which in turn helps give a quality service for power supply."

WOO and EPT are just two examples of Tech Programs at PCC. To learn more about these programs and others visit prattcc.edu/technical-education.



Ag Power Loaned \$300,000 Tractor

As the start of the 2016 fall semester has begun, Ag power students received hands-on training with a Case Magnum 310 loaned from Straub's International out of Pratt, KS. This tractor retails at \$270,000 to \$300,000 and allowed students to receive training on the highest quality of equipment. They spent two days learning and running checks on this tractor and will continue to train on different equipment throughout the year.

The Ag Power Program, taught by Rod Stewart, offers an Associate of Applied Science Degree that prepares students with workforce training and the knowledge of key fundamentals. Students will complete eight weeks training on campus and then move on to an eight week paid internship.

The Ag Power Program was started 19 years ago when seven technicians were invited to PCC to brainstorm a new curriculum. Rod Stewart, one of those original technicians, has been leading the program for the last 18 years. Stewart has a background of more than 30 years in the industry and continues to make improvements to meet the community's needs.



EPT Program Receives New Equipment

Pratt Community College received a new truck for its Electrical Power Lineman Program. During the summer they found a 1999 Freightliner F170 4x4 with an Altec TA41M bucket unit that will be used to assist students in gaining the skills needed for the workforce. Dave Campbell, Electrical Power Technology (EPT) instructor, purchased this truck through a company in Tennessee because of its great condition and lower mileage.

"I am always very happy to be able to get new equipment," said Campbell. With the purchase of this truck the Pratt Campus now has two bucket trucks to help teach the 47 EPT students currently on campus.

"Everyone needs power." said Campbell. "This program is incredibly important to every community."

The EPT Program offers an Associate of Applied Science Degree or students can receive training for one year and earn their Certificate. PCC's EPT program has locations in Pratt, Wichita, and Coffeyville and is one of only three programs in Kansas. Students in the EPT program gain hands-on experience on each campus as well as possible job placement during the summer.

"I was excited to hear about this program through a friend who went through it [at PCC]," said Tate Herron, a second year student, "It is satisfying work that I take extreme pride in."



Sean Flynn Hired as Assistant Men's Basketball Coach

The Pratt Community College Men's Basketball program hired a new assistant coach in time for pre-season training. Sean Flynn, was announced the assistant coach for men's basketball and residence life supervisor. Flynn brings a wealth of coaching knowledge to PCC from many levels of basketball including experience at the NCAA Division I and NCAA Division III levels. He has also spent time coaching in the KJCCC as an assistant coach at Cloud County Community College during the 2014-15 season.

"I'm glad to announce that Sean Flynn will be working with me at Pratt," said Max Good. "He brings a wealth of experience having worked at so many levels despite his age. He is a terrific work out guy and tactician. His future in the basketball world is very promising."

Flynn looks forward to his return to coaching in the Jayhawk Conference.

"Few leagues, at any level of basketball, compare with the Jayhawk Conference," Flynn said. "The players, coaches, rivalries and tradition make this league unique. I love the mentality of junior college athletes and the state of Kansas, so I am very fortunate to be working at Pratt. I look forward to working with our kids and learning from Coach Good."

Flynn comes to PCC from Trinity College in Hartford, Conn. Prior to his tenure at Trinity, Flynn was a graduate assistant at Marshall University for three years. While at Marshall, he helped in the development of post players, advance scouting and was the video coordinator for men's basketball.

Flynn graduated from Suffolk University in 2008 with a bachelor's degree in communication and journalism. He also has a master's degree in adult and technical education and a master's in leadership studies-education administration from Marshall University.

Pratt Community College Inks Deal with Under Armour

The Pratt Community College athletic department has announced that they have secured a multi-year partnership with sports clothing and accessories company Under Armour to become the school's official apparel outfitter starting with the 2016-17 season.

PCC becomes the first college in the state of Kansas to partner with the Baltimore-based company.

"This relationship with Under Armour elevates Pratt Community College to new levels." PCC director of athletics Bill Wilson said. "Branding of our college and the athletic department is the first step in developing pride and consistency."

Under Armour is one of the three company giants when it comes to sportswear and apparel. The 20-year-old company has been on the rise and a growing trend in signing top colleges and universities across the U.S.

With the new deal, Beaver fans can expect new uniforms to be rolled out for each of the PCC teams over the next couple of years. Fans can also expect new apparel to be available to the public in the way of the new PCC athletics website which is scheduled to go live within the next couple of weeks.



Patton Featured Artist in Gallery Exhibit

During September, Pratt Community College's Delmar Riney Art Gallery will exhibit the works of featured artist John Patton.

Patton has been featured in the Delmar Riney Art Gallery before. This years exhibit features photographic elements mixed with graphic design. Patton's exhibit features an array of subjects from nature and portraits to close-up action images.

"Since taking my first photography class at the age of 17, I was hooked on the medium," said Patton. "At that time there was little to no digital photography. Learning on film was a great benefit to me because I had to take more time to consider composition and camera settings to get the shot right the first time. Those lessons have carried through to this day."

While working on his Bachelor's degree, Patton was employed at The Pratt Tribune in the advertising department. A large part of the job was visiting various businesses in town to photograph products and staff for use in advertisements. This experience gave Patton a great deal of real world knowledge about digital photography as well as Photoshop manipulation.



In 2005 Patton opened his own graphic design business, Patton Design.

"My work here has concentrated on web site design, brochure design, logo design and more," said Patton. "I have also taken many staff photos, individual and group, with this work. This led to some of these individuals asking me to make their family portraits. Eventually, demand became great enough that I decided to set up a photography business apart from my graphic design business."

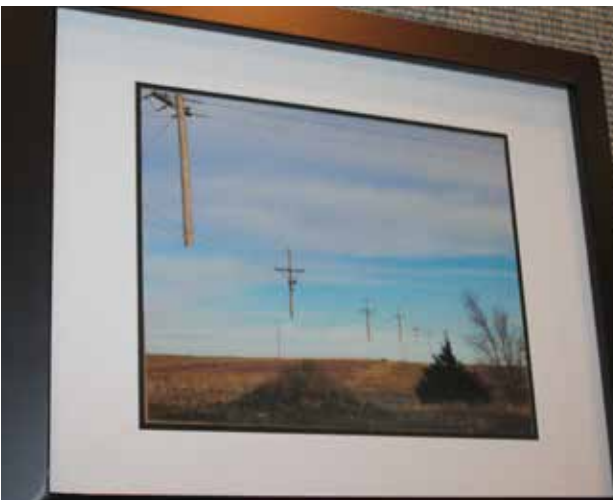
Patton says that he is somewhat unusual for a photographer because he is multi-disciplined. Patton also enjoys shooting across a range of genres. His work includes artistic, product imagery, photojournalism, landscape as well as portrait photography.

"I enjoy the variety and believe that the concepts that make for effective images are universal," said Patton. "I appreciate the opportunity to share my knowledge."

Patton was able to fill in for the regular photography instructor at Pratt Community College for a semester and has also offered workshops. Patton says his blog also has been a great venue to offer tips and advice to those who would like to learn more about how he shoots and edits his images. You can visit his website at www.johnpattonphotography.com.

Patton's work will be on display through the end of July. The Delmar Riney Art Gallery is located in the Riney Student Center and open Monday - Thursday 8 a.m. - 5 p.m. and Friday 8 a.m. to 1 p.m., or by appointment.

If you would like to be considered as a "Featured Artist of the Month" in the Delmar Riney gallery, send your name, contact information and a brief description of your artwork to Pratt Community College, Vice President of Students/EM, 348 NE SR 61, Pratt KS 67124 or lisam@prattcc.edu.



Performing Arts First Showcase of the Year in September

The Pratt Community College Performing Arts Department will host the annual Students and Friends Showcase Sunday, Sept. 18 at 2:30 p.m. in Carpenter Auditorium. The concert will feature a variety of solos and small group performances. Vocal, instrumental, and acting performances will all be included. This is a great opportunity for the community to meet the new Encore members and learn more about the department plans for the year. Admission for the concert is \$5 and doors will open at 2 p.m.



"We love being able to kick off our calendar with a concert that lets our students showcase their favorite types of music and their individual talents. We have a great group of students and we are looking forward to a great year!" said Misty Beck, theatre instructor.

The Pratt Community College Performing Arts Department is a participation based program featuring vocal and instrumental music, music theatre, and technical production. For more information, visit us at www.prattcc.edu

PCC Community and Kids' Choir

The Pratt Community College Performing Arts Department is pleased once again to offer performance opportunities for all ages! Both the community choir and the Kids' Choir are ready to begin rehearsal. The Community Choir is open to anyone who loves to sing who is high school age or older. The group meets on Monday evenings at 6:30 p.m. in the Music room (42) at PCC. To join the choir, singers should attend the next rehearsal Sept. 12 at 6:30 p.m. The group is under the direction of JJ Rupe and performs a variety of music and will be performing at numerous upcoming concerts.



Kindergarteners through fifth graders are invited to join the Kids' Choir. This group meets Mondays from 4-5 p.m. in the Music Room (42) at PCC. There is no cost for the group and members need to register before the first meeting on Sept. 12. To register your singer, please email Misty Beck at mistyb@prattcc.edu. This group will perform at several concerts and shows throughout the year and performs a variety of genres of music. The group is under the direction of Misty Beck and current Encore members.

For more information about these groups please contact Beck at the above email or Rupe at jeremyr@prattcc.edu.

The Pratt Community College Performing Arts Department is a participation based program featuring vocal and instrumental music, music theatre and technical production. For more information, visit us at www.prattcc.edu





SEPT 5

LABOR DAY

NO CLASSES!

SEPT 15

POOL TOURNAMENT

RECCENTER · BEAVER DOME
9:00PM

SEPT 7

VOLLEYBALL

PRATT CC VS. CLOUD CC

6:30PM BEAVER DOME



SEPT 15

CONSTITUTION DAY

LIBRARY 10:00AM

SEPT 18

**PERFORMING ARTS
STUDENTS & FRIENDS
SHOWCASE**

2:30PM
CARPENTER
AUDITORIUM

SEPT 8

TIE DYE T-SHIRTS

BEAVER DOME
9:00PM

SEPT 13

SOCCER

PRATT CC VS. HESSTON

WOMEN 2:00PM
MEN 4:00PM



SEPT 20

FORMER NBA STAR

CARON BUTLER

7:00PM BEAVER DOME

SEPT 22

GROCERY BINGO

9:00PM WOJ HALL

BASEBALL

PRATT CC VS. ENID

4:00PM



SEPT 28

KARAOKE NIGHT

9-11:00PM WOJ HALL



**Student SEPTEMBER 2016
Activities**