



Pratt Community College

Monthly Newsletter

The

The official newsletter of PCC

BEAVER

SEPTEMBER 2019

Buzz

Maximum Student Learning

Individual & Workforce Development

High Quality Instruction & Service

Community Enrichment

Call for upcoming newsletter content

If you have information, ideas for new content, fun facts, or PCC trivia, send them to Megan for inclusion in the next newsletter!

>>> meganm@prattcc.edu

Contents

Showcase Concert	2
DeWeese Family Recognized	2
Freeman Art Instructor	3
Senior Day	4
Kansas Art Guild	5
Suicide Now-What Speaker	6
Paul Primrose Science	7
Women's Soccer Recap	8
Men's Soccer Recap	8
Volleyball v. Pirates	9
Beaver Backer Golf Tournament	10
Wrestling Fundraiser Event	11
Student Life	12
Student Activities	13

Upcoming Dates

Senior Day	Sept. 11
Board of Trustees	Sept. 16
Suicide Awareness Pres.	Sept. 17
Showcase Concert	Sept. 22
Community Picnic	Sept. 24
Blood Drive	Sept. 26

PTK to Host Annual Blood Drive



RedCrossBlood.org | 1-800-RED CROSS | Download the Blood Donor App

The Phi Theta Kappa chapter at Pratt Community College will host a blood drive on Thursday, September 26 from 8:30 a.m. to 1:30 p.m. in the Dennis Lesh Sports Arena. All blood types are needed to ensure a reliable supply for patients. A blood donor card, driver's license or two other forms of identification are required at check-in. Individuals who are 17 years of age, weigh at least 110 pounds and are in generally good health may be eligible to donate blood.

Appointments to donate can be made by visiting PCC Physical Science Instructor, Trisha Jackson, or online at redcrossblood.org. Walk-ins are also welcome to the event. This year all donors who come to donate blood at the blood drive will receive a gift certificate for a free haircut at SportClips.

Phi Zeta, PCC's chapter of Phi Theta Kappa regularly and proudly partners with the American Red Cross to hold blood drives on campus. The Red Cross has over 130 years of experience providing humanitarian aid – including more than 70 years of supplying blood to those in need.

The American Red Cross shelters, feeds and provides emotional support to victims of disasters; supplies about 40 percent of the nation's blood; teaches skills that save lives; provides international humanitarian aid; and supports military members and their families. The Red Cross is a not-for-profit organization that depends on volunteers and the generosity of the American public to perform its mission.

Performing Arts Presents Annual Students Showcase Concert

The Pratt Community College Performing Arts Department will host the annual Department Showcase Sunday, Sept. 22 at 2:30 p.m. in Carpenter Auditorium. The concert will feature a variety of solo performances and Encore's first performance of the year. This is a great opportunity for the community to meet the new Encore members and learn more about the department plans for the year. Admission for the concert is \$5 and doors will open at 2 p.m.

"We love being able to kick off our calendar with a concert that lets our students showcase their favorite types of music and their individual talents. We have a great group of students and we are looking forward to a great year!" said Misty Beck, instructor.

The Pratt Community College Performing Arts Department is a participation based program featuring vocal and instrumental music, music theatre, and technical production. For more information, visit us at www.prattcc.edu



DeWeese Family Named One of KFB Farm Families Of The Year

Pratt Community College alumni, former faculty member and current Chairman of the Board of Trustees named one of Kansas Farm Bureau's (KFB) Farm Families of the Year. Dwane and Sue DeWeese are being recognized as one of 10 outstanding Kansas Farm Bureau families who have distinguished themselves through participation in Farm Bureau programs and leadership, family activities, community and civic service, as well as displaying good farm operation management.

"Dwane and Sue DeWeese of Pratt County have a combined 80 years of experience teaching. When they didn't want to move for Dwane to pursue his doctorate in the early 1970s, they spent their savings on a farm. They now raise corn, beans and cotton in addition to managing a small cattle operation. Sue cares for four alpacas and spins their fleece into yarn at her embroidery store. The DeWeeses are big believers in Kansas Farm Bureau's role as the "consistent voice of agriculture." Congratulations to the DeWeese family for being named one of Kansas Farm Bureau's Farm Families of the Year," according to the KFB facebook page.



Both Dwane and Sue are PCC alumni and considered a part of the family being major supporters of the college and its students. Dwane was a PCC faculty member for more than 30 non-consecutive years in the technology and automotive departments. Currently, Dwane sits as Chairman of the Board of Trustees and has been on the board since 2013.

Freeman Hired as New Art and Ceramics Instructor at PCC

Pratt Community College is excited to announce the hiring of Kansas artist, Mark Freeman, as art and ceramics instructor. PCC welcomed Freeman just before the fall semester began and has hit the ground running as classes began Aug. 21.

Freeman, a Kansas native, grew up in Ellinwood where his affinity for art began early while in Middle School. He enrolled in art class and often got himself into trouble. What started as a simple punishment for acting up in class Freeman began enjoying mixing clay and says it helped him stay out of trouble and he continued art classes into high school.

“Luckily, my high school art teacher does not remember that part,” said Freeman. “Honestly, we all have that one teacher that has inspired us along the way and mine just happened to be an art teacher early on.”

Freeman attended Barton Community College and later Fort Hays State University where he received a BFA in Ceramics and a Bachelor’s of Science in Secondary Education.

“My teaching philosophy revolves around the student as a learner,” said Freeman. “I believe strongly in the importance of art in education as well as the freedom of self-expression.”

Freeman says his classes are structured in a way that allows a student some flexibility in art exploration with guided instruction along the way.

“We all learn and express ourselves in different ways,” said Freeman. “I push my students to be free thinkers and better makers. I see myself as a mentor whose job is to guide students in their creative journey toward their ultimate goal.”

Freeman’s goal for this academic year, his first at PCC, is to give students a new sense of appreciation for art. He says that he wants to inspire them in the same way he was inspired by his teachers.

As well as being an educator, Freeman, is also a nationally known artist. He and his wife, Bambi, created their own studio and business and often travel the U.S. teaching workshops and selling their artwork at fairs and galleries.

Freeman’s classes are open to all students as well as community members interested in throwing clay and learning to spin decorative pieces or create drinking vessels, platters and more. To learn more about Freeman’s classes contact him directly at markf@prattcc.edu.





PRATT COMMUNITY COLLEGE SENIOR DAY



9 - 1PM

LUNCH PROVIDED
CAMPUS
TOUR INCLUDED

LEARN ABOUT

- Admissions
- Financial Aid & Scholarships
- College Start Courses

EXPLORE PCC ACADEMIC PROGRAMS

- Psychology/Social Work
- Business/General Education
- Sports Performance & Wellness
- Physical Education & Coaching
- Education/Graphic Arts
- Science/Math
- Pre - Nursing

SEPT
11

Register at Prattcc.edu/SeniorDay

Kansas Art Guild on Exhibit in Art Gallery Through September

Throughout the month of September the Delmar Riney Art Gallery will exhibit works of art from multiple artists in the Kansas Art Guild.

The Guild grew rapidly and soon moved to the Wichita Art Museum. At that time, the name was changed to the Community Art Guild. When the Wichita Art Museum underwent renovation, the Guild moved to the Wichita Center for the Arts, then in January, 2018 they moved to the newly constructed Mark Arts | Mary R Koch Arts Center, its present location.

In the summer of 1993, members voted to change the name to the Kansas Art Guild, Inc. At that time, it was decided to incorporate. The name is very appropriate since many of the members live many miles outside the Wichita Area.

Regular meetings are held at 1:00 PM on the first Tuesday of each month at Mark Arts in Wichita, Kansas. Members share their recent works which are judged by visiting speakers. The Guild also holds exhibitions at several locations in the area throughout the year. The Guild's goal is to promote art and artists.

Most of the works on exhibit are for sale by the artist. Prices range from \$125 to \$750 per piece.

For more information about the Kansas Art Guild or to contact them, visit www.kansasartguild.com

The exhibit will be on display throughout the months of September and October in the Delmar Riney Art Gallery at PCC. For more information or to be considered as a "Featured Artist of the Month," contact Lisa Perez Miller at 620-672-3559 or lisam@prattcc.edu.



SPONSORED BY THE
PRATT COMMUNITY COLLEGE
STUDENT SUCCESS CENTER

SUICIDE

NOW-WHAT?

PRESENTED BY
Beth Akins
Horizons Mental
Health Center



Akins, LSCSW, LCAC
Clinical Integrated
Services



SEPT. 17
7PM
CARPENTER
AUDITORIUM

Physical Science Instructor Paul Primrose Joins PCC Faculty

Paul Primrose is joining Pratt Community College from an extensive science career. He earned his B.S. in chemistry from Northern Arizona University in 1993, then went on to earn his doctorates in chemistry from Penn State in 1999. Upon earning his doctorates, Primrose taught at a variety of institutions around the central Texas area including; Baylor University, University of Mary Hardin-Baylor, and West ISD, Primrose's local hometown high school.

Primrose has two main goals for the school year; for students to remember the natural science stories and to allow the class to create and become its own unique class.

"The natural sciences have wonderful stories that lay behind the body of data that makes up each field of study," said Primrose. "These stories or pictures of the natural world are what I hope students remember most."

With his second goal being that each class he teaches be free enough that student personalities can shine through.

"A good class for me is one that student's look back on and say, "I remember our class",," said Primrose.

Primrose believes that students learn best by becoming active in their learning.

"Each subject, even within a specific field, has its own language," said Primrose. "Over time you learn the language and adapt to it."

Primrose aims to permit time in class for the students to practice speaking the language and learning more about it. During class he demonstrates and highlights particulars of that specific "language" and then gives the students the opportunity to practice learning it. After teaching at the high school level, Primrose has seen the value of creating a variety of ways to communicate with students to encompass a variety of learning styles.

Primrose initially was captivated by science, because he has always thought of science as a puzzle, and he enjoys attempting to solve puzzles. Over the years, Primrose's reason for choosing to become an educator has changed. Primrose has stated that his primary motivation for teaching has evolved over the years. However, his main reason today for choosing the path of an educator is the connections that are made with students.

"The greater the shared struggle, the stronger the bond," said Primrose. "As time goes by the friendship grows, even after the class has ended."

Primrose classes this semester include Introduction to Geology, Fundamentals of Chemistry and General Chemistry.



Women's Soccer Notches First Win of 2019

With one of their own celebrating a birthday, the Beavers and birthday girl Hannah Grant felt a win would be proper icing on the cake.

The Beavers used two penalty kicks to distance themselves over Redlands Community College (Okla.) on their way to a 2-0 road win. Opening the season with consecutive losses, Coach Burnett wanted to see her girls play with more intensity in Pratt's third match, and she noted the difference following today's result.

"A lot of hard work, really," Burnett said. "We came out from the beginning wanting it more and that was huge."

Coming up short in the first two games was not something Burnett wanted clouding her team so early in the season. She relayed an upbeat message heading into today's match, and it would appear her words were well-received.

"The biggest thing the past two days we'd been thinking about was positivity," Burnett said. "Believing, and being positive throughout the whole field. We came in with effort from the beginning and that was something that we lacked the first two games. That passion and the hard work really set the tone."

A win on her birthday wouldn't come without some battle scars for Grant. The recipient of two fouls in the six-yard box, Grant saw teammate



Madison Phillips send home the first of two penalty kicks. A few minutes later, Grant was fouled again, but this shot was going to be hers.

For many of Burnett's players, today's result was the first win of their college careers. Coach sensed a wave of gratification and relief trickle down the bench as well as the pitch.

"They were really excited because they know the potential of this team," Burnett said. "It was good for the freshman to see a good win and for the sophomores know what we're capable of. The freshman now have that confidence heading into the next few games."

Men's Soccer Routs Coffeyville 5-0

After consecutive 1-0 losses to start 2019, Kevin Kewley's bunch had had just about enough.

The Beavers opened their home schedule with a dominating 5-0 win over Coffeyville earlier this afternoon, as the Beavers controlled the tempo of the match, forcing the Red Ravens into countless mistakes, and to chase the game rather than the reverse. Kewley had glowing words for his team following the rousing result.

"Just a complete team effort," Kewley said. "We played team defense in the prior two games and that was evident today. We also took our chances and that was the difference. I'm delighted."

Freshman Davan Duggan-Flynn initiated the scoring, redirecting a loose ball in the six-yard box into the back of the net. Freshman Clayton Simmons followed with a cheeky curler from the left side of the box up-and-around the goalkeeper to make it 2-0. From there, it was all Beavers. Sophomore Joe Brett dribbled his way past multiple defenders before slotting a low liner through to give the Beavers a 3-0 lead. Freshman Emre Turuscu scored as well, with Duggan-Flynn adding an assist to his stat line. Sophomore Nadir



Cano-Lorente capped Pratt's monstrous day with a nifty curler that found its way over the keeper's head and into the left side of the net.

Kewley is still experimenting with his shape and tactics, but today offered soccer-lifer an opportunity to try plenty of new things.

"I played guys at different positions, and moved everybody about. Everyone got playing time, so it was great. They gave me a great problem today because everyone went in there and did their job."

Beavers Downed 1-3 by Pirates

A back and forth affair quickly turned in favor of the Pirates, as Independence departed Pratt with a 3-1 win.

With the Beavers and Pirates splitting the first two sets, it appeared the Beaver Dome audience would be starting its Labor Day weekend with a jolt. However, the Pirates took advantage of Beaver mistakes, sweeping the final two sets 16-25 and 15-25. Coach Rambo said the Beavers offered too many chances for the Pirates to take advantage.

"We weren't nearly as offensive as we should have been," Rambo said. "Indy didn't make a whole lot of mistakes, and we couldn't capitalize when they did. That's how volleyball goes."

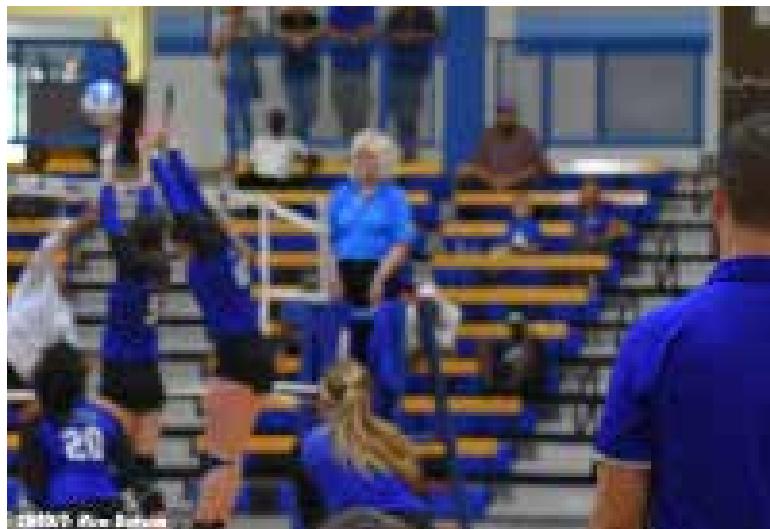
A young Beavers roster is still working out the kinks, flashing moments of encouragement. Rambo walked away impressed with a number of his freshmen, including hitter Morgan Schrag.

"She played great," Rambo said. "She doesn't have a consistent role yet and she'll come in depending on which outside is struggling. But she comes in and does a very good job."

"Mariah Hillman had seven kills and only one error. She hit .380 and did a very good job with the kills."

Defensively, Kylie Fletcher, Haylee Parker and Kierra McGuire each mixed in 15 digs, as Rambo was very complimentary of his back row. However, not transitioning defense into offense will give Rambo a chance to highlight specific areas of improvement.

"We have to stay behind the ball better," he said. "With a young group, they get very antsy and they overrun the ball. A lot of times when



they overrun the ball they get the ball behind their head and they swing deep, making those deep errors. We have to make sure to slow that down a little bit and keep the ball in front of them so they can get more consistent swings."

Rambo also relayed that a group learning the ins and outs of high-level volleyball is still adjusting to its finer points.

"We aren't putting ourselves in position," Rambo said. "We're making it very, very easy to close a block on us because we're out of system so often. We have to play a little bit smarter and more disciplined."

The Beavers will again hit the road for an extended weekend in Texas, as Rambo and his girls will participate in the DAC Fall Classic in Irving on September 6-7, with the schedule including matches against in-state junior colleges Blinn College, North Lake College, Cedar Valley College, and Mountain View College.

JOIN THE BEAVER BACKERS TODAY!

PRATT COMMUNITY COLLEGE



FIND OUT MORE ON OUR WEBSITE

gobeaversports.com/information/beaverbackers

The Pratt Community College Beaver Backers is an organization dedicated to supporting, promoting and advancing Pratt Community College athletics. The Beaver Backers is an organization that will assist Pratt Community College with providing the support and resources necessary for student-athletes to achieve success in each of these pursuits.

Beaver Backer Golf Tournament a Sweeping Success

The Beaver Backers Four-Person Scramble carried on as scheduled the morning of August 24, despite the threat of inclement weather. The golf outing gave the group's members a chance to mingle with Pratt Community College student-athletes, catch up with friends, and of course play a round of golf.

"We had a beautiful day to play," said Pratt Community College Athletic Director Tim Swartzendruber, the organizer of the event. "I want to send a big thank you to Darrell Shumway for all of his help and also say thanks to all who participated and sponsored. We plan to continue it next year."

Below are the results of the four-person scramble, with the event hosting 13 teams:



Championship Flight

1st: Team sponsored by New York Life-C.L. Meigs, Jeff Logan, Zach Ladesma, Jarin Hanika

2nd: Seth Thibault, Brad Lunsford, Gaten Wood, Shon Fields

3rd: Team sponsored by Legacy Bank-Jack Galle, Chase Galle, Danny Mason, Steve Lunsford

Note: All three teams scored a 57 and places were determined by scorecard

First Flight

1st: Kevin Hamm, Rusty Laverentz, John Ishee, Jason Conkle

2nd: Mike Calvert, Darrell Shumway, Jeff Shumway, Mike Koler

3rd: Eugene Stotts, Marlin Stotts, Rodney Walker, Robert Householter

Special Prizes

Closest to Pin: Russ Rambat

Longest Drive: Jeff Logan

Longest Putt: Eugene Stotts





PRAATT WRESTLING

BEEF FEED

OCTOBER 5

PCC CAFETERIA 7PM

DINNER RAFFLE AUCTION



UNDER ARMOUR.

FREE DINNER

\$20 - 5 RAFFLE TICKETS

\$5 - 1 RAFFLE TICKET

RSVP: KEN KEPLEY

704-467-3465 kennethk@prattcc.edu

SILENT AUCTION ITEMS

STARTING BID - \$200.00

WATERFOWL HUNT

CENTRAL KANSAS

GEESE AND/OR DUCKS

*MUST HAVE KANSAS HUNTING LICENSE,
STATE WATERFOWL STAMP, AND FEDERAL
DUCK STAMP.

2 DAY HUNT

PROVIDED BY JAY SWEET

STARTING BID - \$250.00

TURNER RANCH HOG HUNT - LAMAR, OK

HOSTED BY FORMER PRATT TRACK &

FIELD/XC COACH RYAN TURNER

GOOD FOR 2 PEOPLE - 1 HOG PER PERSON

PROVIDE OWN AMMO & RIFLE

GUIDED NIGHT HUNT ON 1200 ACRES

NOT VALID DURING DEER SEASON: 10/1/18- 1/15/19

(LODGING: FREE CAMPING AVAILABLE

OR BEST WESTERN WEWOKA, OKLAHOMA)





September 2019

Sun	Mon	Tue	Wed	Thu	Fri	Sat
1	2 No Classes	3 Paint Night Café 9PM-10:30PM 	4	5 PCC Softball VS Dodge City Double Header 4PM & 6PM Lemon Park	6	7 PCC Soccer VS. Garden City PCC Soccer Field 1PM/3PM
8	9 Flag Football 6th Street Park 7PM Sign-up There	10 Sept 11th PCC Soccer VS. Cloud PCC Soccer Field 2PM /4PM	11 PCC Volleyball VS. Hutch Beaver Dome 6:30PM	12 Madden Tournament Beaver Lounge Sign-up at 8:45 Tournament Starts at 9PM	13	14 PCC Volleyball VS. Colby Beaver Dome 2PM
15	16 PCC Volleyball VS. Dodge Beaver Dome 6:30PM	17 PCC Baseball VS Tonkawa 1PM Suicide Awareness Speaker Auditorium 7PM	18 PCC Soccer VS. Barton PCC Soccer Field 2PM/4PM Sept 18th PCC Softball VS Garden City Double Header 4PM & 6PM Lemon Park	19 Outdoor Movie Night John Wick Chapter 3 Porter Hall Wall 9PM	20	21 PCC Volleyball VS. Butler Beaver Dome 6:30PM
22 Performing Arts Students and Friends Showcase Auditorium 2:30PM	23	24 Community Picnic Benson Education Center 5:30PM-7:30PM	25 Sept 26th PCC Baseball VS Dodge City 1PM	26 Roommate Quiz Library 9PM-10PM 	27 Pratt After Dark Disney: Aladdin 9PM-Midnight	28 PCC Soccer VS. Dodge City PCC Soccer Field 1PM/3PM
29	30 Grocery Bingo Café 9PM	<p>Need to Know... Sept 2nd: No Classes - Offices will be Closed</p>				

Add Bucky Beaver
 @prattcc
 @prattcc
 @prattcc
 Download the App
 Beaver Nation

Other Places to See!!!

- *Rolla Rena Skate Center
- *Movie Theaters - Kingman, Greensburg, and Pratt
- *Disk Golf Course @ May Dennis Park
- *Pratt County Historical Museum
- *The Big Well - Greensburg
- *Hutchinson Salt Mine

Sept 27th

Pratt After Dark: Disney Movie, Games, Food, and Prizes Commons - 9PM to Midnight



For PCC Away Games Visit!!! WWW.GOBEAVERSSPORTS.COM

CHECK IN AT EVENTS. EARN POINTS. GET REWARDED

